

# NHS Scheduling

## Class of 2023

### Grade 12



2022-2023 School Year

# Class of 2023

# Graduation Requirements (Click to view on ODE website)

## 1. Course Requirements

- 4 Math
- 3 Science
- 4 English
- 3 Social Studies
- ½ Health
- ½ PE
- 1 Fine Arts
- 5 Electives

+20 hours of community service!

## 2. Show Competency

Must take 6 EOCE Tests

- Bio
- Algebra 1 (684)
- English II (684)
- Geometry
- US History
- Government

-----  
OR \*if you do not obtain 684 on ELA II/ALGI you have 4 alternate pathways (must attempt ELA II and ALG I 2 times)

- Military
- CCP
- Career
- ACT/SAT

## 3. Show Readiness

Earn 2 of 12 “Diploma Seals”

- [OhioMeansJobs](#)
- [Honors Diploma](#)
- [Biliteracy](#)
- [Technology](#)
- [Industry-Recognized Credential](#)
- [Military Enlistment](#)
- [Citizenship](#)
- [Science](#)
- [College-Ready](#)
- Fine and Performing Arts
- Student Engagement
- Community Service

# Graduation Requirements for the Class of 2023

## COURSE REQUIREMENTS

| <u>Academic Area:</u> | <u>Credit</u> |
|-----------------------|---------------|
| ENGLISH               | 4 Credits     |
| MATHEMATICS           | 4 Credits     |
| SCIENCE               | 3 Credits     |
| SOCIAL STUDIES        | 3 Credits     |
| HEALTH                | ½ Credit      |
| PHYSICAL EDUCATION    | ½ Credit      |
| FINE ARTS (Music/Art) | 1 Credit      |
| ELECTIVES             | 5 Credits     |

---

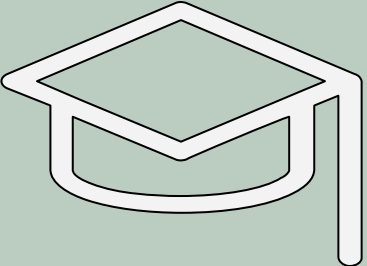
|                      |                   |
|----------------------|-------------------|
| <b>TOTAL CREDITS</b> | <b>21 Credits</b> |
|----------------------|-------------------|

## ELECTIVE OFFERINGS

---

Business, English, Fine Arts, Foreign Language, Math, Science, Social Studies, Family and Consumer Science

# Class Promotion



## Graduation Status

Must earn 21 credits including required courses

### Grade 12

#### Senior Status

Must earn 12.0 credits

### Grade 11

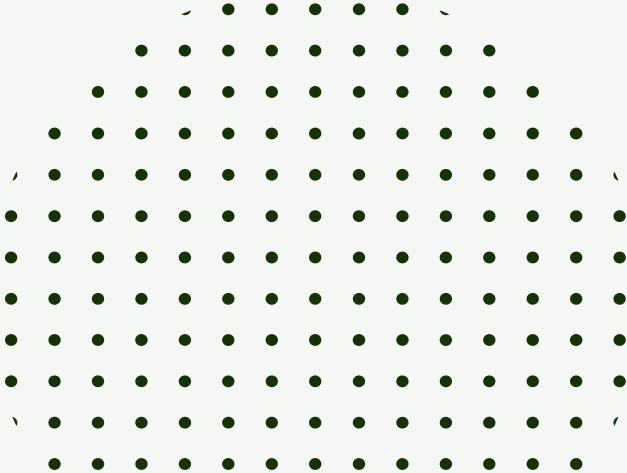
#### Junior Status

Must earn 8.50 credits

### Grade 10

#### Sophomore Status

Must earn 3.75 credits



# Calendar of Scheduling Events



## Week of Feb. 7

**TODAY!**  
Scheduling  
Presentation in  
English class.



## Feb. 7 - Feb 16

Talk to Parents and  
Teachers about  
Recommendations  
&  
Research Courses



## February 16

Scheduling  
Worksheets  
collected in  
English class or  
turned into  
Counselor



## Mid February - Start of School Year (Aug. 24th)

Contact NHS  
Counselor with  
questions/changes

**No Schedule  
Changes After  
the Start of  
School Year**

# Classes for Senior Year

- o 1 credit of English
- o 1 credit of math
- o 4 additional credits (Science-CVCC)

\*If you have not earned credits for Fine Arts, Health, or PE (or submitted a PE waiver by now) you need to schedule these for your senior year.

\*If you fell behind in academic courses required for graduation, you must take those over the summer or request the courses for your senior year.



# CORE CLASSES

The next set of slides list specific course options for the 2 remaining core classes for graduation.



Click below to  
learn more  
about English  
course offerings



# English Course Options

- 1410 College Prep English 12 (1.0 credit)
- [1400 AP English Literature](#) (1.0 credit)
  - Click link above for more information
- 1401 AP English Lang. & Comp. (1.0 credit)
- 1405/1406 College Writing I/II
  - application to KSU required, see next slide

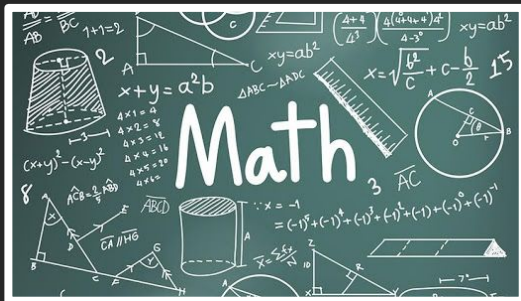


# Dual-enrollment College Writing: Unique situation

---

- This class is a unique situation. Students will earn college credit while still having somewhat of a high school experience. This class runs differently than ordinary HS courses: writing days, conference periods, a high set of expectations. If students are willing to write and spend about an hour reading and preparing outside of class for every hour spent in class, this will be enjoyable. If not, it may be quite a challenge.
- It's not a "write it the night before" type of class
- A lot of energy and effort will fall on students.
- Two step registration process:
  - Students turn in [application packet](#) to either of the two instructors
  - Students apply directly to KSU (Geauga/Twinsburg campus): [www.kent.edu/ccp](http://www.kent.edu/ccp)

Click below to  
learn more  
about math  
course offerings

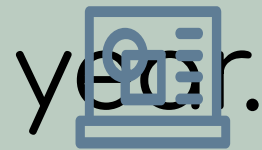


# Math Course Options

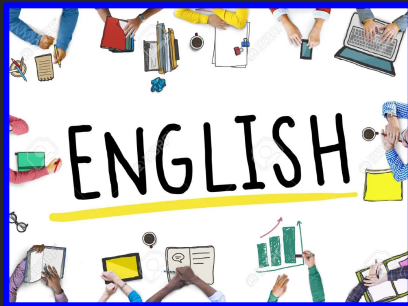
- 2110 Algebra II
- 2300 Mathematical Modeling and Reason.
- 2310 Data Science Foundations
- 2320 Discrete Math / Computer Science
- 2400 Pre-Calculus
- 2405 Honors Pre-Calculus
- 2410 Honors Calculus
- 2500 AP Calculus AB
- 2502 AP Calculus BC
- 2610 AP Statistics
- 2130 Financial Algebra

# ELECTIVES

The next set of slides list specific  
electives available for your senior



Click below for more information about these electives



# English Elective Course Options

(Click blue underlined links to view videos)

- [1311 Film Study \(0.5\)](#)
- 1321 Drama, Performance, & Product. (0.5)
- 1461 Speech and Debate (0.5 credit)
- [1471 Creative Writing for Beginners \(0.5\)](#)
- [1472 Advanced Creative Writing \(0.5\)](#)
  - (pre-req. Creative Writing for Beginners)
- Yearbook
  - Must see Mr. Killian for application process << [Ray.Killian@nordoniaschools.org](mailto:Ray.Killian@nordoniaschools.org) >>

# Join Yearbook

Year-long Elective

Learn:

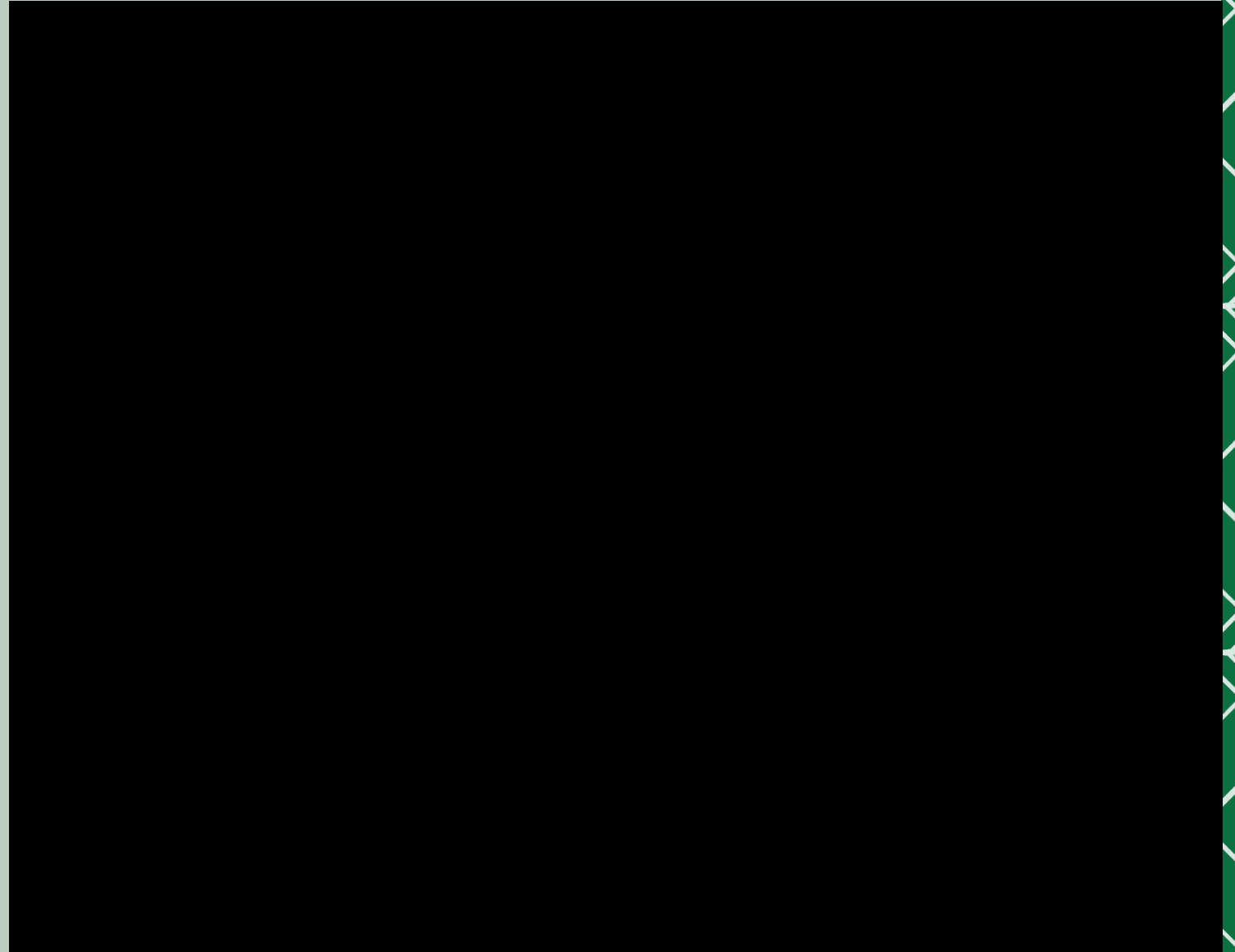
- Photography
- Graphic Design
- Photoshop
- Communication
- Problem Solving and more

Application Required

Contact:

[Ray.killian@nordoniaschools.org](mailto:Ray.killian@nordoniaschools.org)

Room 304





Click below to  
learn more  
about science  
electives for  
seniors



## Science Electives for Seniors!

- 3120 AP Biology (1.0 credit)
- 3220 AP Physics (1.0)
- 3320 [AP Chemistry](#) (1.0) (5 sem hours)
- 3328 [Dual Enrollment Gen. Chemistry I and II](#) - must meet requirements through KSU (10 sem hours)
  - if requested, students will receive application information from Ms. Evans
- Semester electives (0.5 credit each):
  - 3115 Astronomy
  - 3341 Anatomy & Physiology
  - 3321 Engineering & Design
  - 3326 [Forensics](#) (click for video)
  - 3500 [Digital Fabrication](#)
  - 3501 [Remotely Piloted Aerial Vehicles](#)
  - 3502 [Biotechnology](#) (click for video)

\*Click [here](#) to see a comparison  
between AP and CCP Chemistry.



Click picture for more information about these electives

(on the slide linked below, please click on the course title for videos about each course)



## Social Studies Elective Course Options

- 4600 Psychology (0.5 credit)
- 4800 Sociology (0.5)
- 4810 Sports History (0.5)
- 4820 War (0.5)

Talk to current social studies teacher:

- 4420 AP Economics (1.0)
- 4320 AP Government (1.0)
- 4120 AP World History (1.0)
- 4220 AP US History (1.0)
- 4610 AP Psychology (1.0)
- 4110 Black Experience I\* **NEW!**
  - (CCP Sem I, 1.0 credit)
- 4120 Black Experience II\* **NEW!**
  - (CCP Sem II, 1.0 credit)

**\*Application process required to KSU Geauga, students who request course will be given a registration packet**

# World Language Options

Click below to  
learn more  
about World  
Language  
course options



- 5110 CP French I
- 5210 CP French II
- 5215 Honors French II
- 5310 Honors French III
- 5410 Honors French IV
  
- 5160 CP German I
- 5260 CP German II
- 5265 Honors German II
- 5365 Honors German III
- 5460 AP German Lang. & Culture
  
- 5150 CP Spanish I
- 5250 CP Spanish II
- 5255 Honors Spanish II
- 5355 CP Spanish III
- 5350 Honors Spanish III
- 5450 Honors Spanish IV
- 5550 AP Spanish Lang. & Culture
  
- 5010 World Travel (0.5 credit)

Click below to  
learn more  
about art  
course offerings



# Art Elective Course Offerings

- 7111 Art I (recommend for Painting I & Drawing I)
- 7112 Art II (recommend for Jewelry I & Ceramics I)
- 7212 Jewelry I
- 7221 Drawing I
- 7231 Painting I
- 7241 Ceramics I
- 7213 Jewelry II **NEW**
- 7351 Drawing II
- 7361 Painting II
- 7421 Ceramics II
- 1160 Media Production
- 7500 Digital Art & Photography I
- 7510 Digital Art and Photography II
- 9865 Adaptive Art
- 7115 Community Art & Design **NEW**
- 7600 AP Art & Design (1.0 credit)

\*All art courses are 0.5 credits (unless otherwise noted)

# Business & Technology Elective Course Options

Click on the picture below to learn more about the Business course offerings



- 6002 Personal Finance (0.5 credit)
- 6007 Careers in Sports (0.5)
- 6100 Computer Applications (0.5)
- 6415 Entrepreneurship (0.5)
- 6440 Marketing I (1.0 credit - year)
- 6450 Marketing II (1.0)
- 6420 Accounting I (1.0)
- 6430 Accounting II (1.0)
- 2620 [AP Computer Science Principles](#) (1.0)
- 2630 [AP Computer Science A](#) (1.0)
  - See Ms. Fales - Room 300 for both AP Comp Science course approvals
- 0015 Computer Maintenance & Repair I, 0016 CM&R II, or 0017 CM& R III
  - Required application from Mr. Witschey (see next slide)



Click below for more information about this elective



# Computer Maintenance and Repair Elective

- 0015, 0016, or 0017 Computer Maintenance and Repair I, II, or III (1.0 credit)
- Students must fill out an [application](#) and submit via email to Mr. Witschey

<< [jason.witschey@nordoniaschools.org](mailto:jason.witschey@nordoniaschools.org) >>



# NHS Family and Consumer Science

- 8221 Foods with Flair
- 8271 The Science of Cooking (Pre-req. = Foods w/Flair) -

**NEW!**

- 8331 Careers in Design
- 8351 Life Choices
- 8353 Leadership and Community Service - **NEW!**
- 8352 Life on Your Own **NEW!**

\*All of these courses are .5 credit

## **Foods with Flair (10th-12th grade)**

A healthy lifestyle and nutrition are our focus in this course, we learn about :

- Preparation of various healthy dishes
- Food and Kitchen Safety
- Portion Control
- Nutrients Your Body Needs
- Food Substitutions

"You should take it. It's a lot of fun and you actually learn stuff you can use!"

"This class makes you open your eyes about all of your food choices."

"All of the food you make is really good and it's healthy!!"





Click below to  
learn more  
about Health  
and PE elective  
course offerings



## Health & PE Elective Course Options

- 9640 Recreational Sports & Games
- 9641 Team Sports
- 9642 Basketball
- 9643 Intro to Officiating I - **NEW!**
- 9644 Intro to Officiating II - **NEW!**
- 9650 Health Careers
- 9857 TeamMates
- 9660 Lifetime Fitness - 1st semester
- 9662 Lifetime Fitness - 2nd semester
- 9691 Cadet Core I - **NEW!**
- 9692 Cadet Core II - **NEW!**

These classes are each .5 credit and are a semester course. Students may select multiple courses.

**These courses DO NOT replace the Health and PE requirements for graduation.**

Click below to  
learn more  
more about  
this elective



# Library Ambassador Elective Course

- Library Ambassador I (1.0 credit)
- Library Ambassador II (1.0 credit)
- Library Ambassador Specialist (1.0 credit)
  
- See Ms. Wojtecki in the IMC for approval

Click below to learn more about music course offerings



# Music Elective Course Options

- 7025 Band (1.0 credit)
- 7030 Jazz Band (1.0 credit)
- 7030H Honors Jazz Band
  - see Mr. Weaver for approval for either
- 7053 Choir (1.0 credit)
  - Mr. Pickering will contact you for a music audition for choir placement

Click below to  
learn more  
more about  
this elective



# CBI (Career Based Intervention)

- 0510 CBI Class (1.0 credit)
- 0550 CBI Work (2.0 credits)
- See Mr. Smith in Room 102 for approval

Click here to  
learn more  
more about  
this elective

# Student Council

- Looking for young leaders excited to be a part of making the high school and community a better place.
- Mrs. Cynthia Spellman Advisor - this is a scheduled class at the HS.
- Please fill out and return application to Mrs. Spellman in room 508 by February 21st. I will contact you for an interview.
- See application below or stop in room 508.

[https://docs.google.com/document/d/1S97OGzagFWjAS\\_DyIObZud9uLO7k5af68GM69uKvSQA/edit?usp=sharing](https://docs.google.com/document/d/1S97OGzagFWjAS_DyIObZud9uLO7k5af68GM69uKvSQA/edit?usp=sharing)



<https://watch.screencastify.com/v/o3dzAcOGqDpN6HQCX9QY>

# Senior Class Officers 2023

If you are interested in applying to be a senior class officer email Mrs. Spellman a short resume, your email, and your cell phone number. Deadline to apply s Monday February 21st

Mrs. Spellman will contact you for an interview.

Senior class officers meet daily and will have their schedules adjusted once the final selections are made.

Cynthia.Spellman@nordoniaschools.org



# Senior Experience (7th period release)

- Seniors have the option to request Senior Experience (7th period release) - in place of study hall
- You must first submit [this Google Form](#) indicating your plans for Senior Experience
  - If you have not submitted a form, you will not be approved for Senior Experience
- Senior Experience is not guaranteed and must be approved

# What if I change my mind?

## Schedule Changes/Dropping Classes

**YES!** You can change course requests BEFORE the first day of school.

**AND NO!** You cannot change course requests AFTER the first day of school.

### EXCEPTIONS


1. Scheduling conflict that cannot be resolved.
2. Changes necessitated by failures.
3. Satisfactory completion of a course in summer school.
4. A technical error was made in the process of scheduling the student's requests.

# Summer School Options

- If you fail any of your academic courses, it is **strongly recommended** that you recover the credit over the summer.
- Students have the opportunity to register for online credit recovery.
- Please see your school counselor for further information.
- More details will be sent to all students in May.

# Diploma with Honors

- 5 options for Honors Diplomas.
- If your goal is to earn one, be aware of requirements and schedule credits/courses accordingly.
- Students can earn one of the Diploma with Honors options.
- For more detailed information click [here](#)


**Ohio High School Honors Diploma**

| Criterion                           | Ohio Diploma   | Academic Honors Diploma   | International Baccalaureate Honors Diploma  | Career Tech Honors Diploma  | STEM Honors Diploma   | Arts Honors Diploma (Includes dance, drama/theatre, music, and visual art)  | Social Science & Civic Engagement Honors Diploma  |
|-------------------------------------|--|---|---|---|---|---|---|
| <b>Math</b>                         | 4 units, must include one unit of algebra II or equivalent | 4 units, Algebra I, Geometry, Algebra II (or equivalent), and one other higher level course or 4 course sequence that contains equivalent or higher content | 4 units, Algebra I, Geometry, Algebra II (or equivalent), and one other higher level course or 4 course sequence that contains equivalent or higher content   | 4 units, Algebra I, Geometry, Algebra II (or equivalent), and one other higher level course or 4 course sequence that contains equivalent or higher content   | 5 units, Algebra I, Geometry, Algebra II (or equivalent), and one other higher level course or 4 course sequence that contains equivalent or higher content <sup>4</sup>                                    | 4 units, Algebra I, Geometry, Algebra II (or equivalent), and one other higher level course or 4 course sequence that contains equivalent or higher content   | 4 units, Algebra I, Geometry, Algebra II (or equivalent), and one other higher level course or 4 course sequence that contains equivalent or higher content   |
| <b>Science</b>                      | 3 units  | 4 units, including two units of advanced science <sup>2</sup>   | 4 units, biology, chemistry, and at least one additional advanced science <sup>2</sup>  | 4 units, including two units of advanced science <sup>2</sup>   | 5 units, including two units of advanced science <sup>2</sup>   | 3 units, including one unit of advanced science <sup>2</sup>  | 3 units, including one unit of advanced science <sup>2</sup>  |
| <b>Social Studies</b>               | 3 units  | 4 units   | 4 units   | 4 units   | 3 units   | 3 units   | 5 units   |
| <b>World Languages</b>              | N/A  | 3 units of one world language, or no less than 2 units of each of two world languages studied   | 4 units minimum, with at least 2 units in each language studied   | 2 units of one world language studied   | 3 units of one world language, or no less than 2 units of each of two world languages studied   | 3 units of one world language, or no less than 2 units of each of two world languages studied   | 3 units of one world language, or no less than 2 units of each of two world languages studied   |
| <b>Fine Arts</b>                    | 2 Semesters  | 1 unit  | 1 unit  | N/A   | 1 unit  | 4 units   | 1 unit  |
| <b>Electives</b>                    | 5 units  | N/A   | N/A   | 4 units of Career-Technical minimum <sup>3</sup>  | 2 units with a focus in STEM courses  | 2 units with a focus in fine arts course work   | 3 units with a focus in social sciences and/or civics   |
| <b>GPA</b>                          | N/A  | 3.5 on a 4.0 scale  | 3.5 on a 4.0 scale  | 3.5 on 4.0 scale  | 3.5 on a 4.0 scale  | 3.5 on a 4.0 scale  | 3.5 on a 4.0 scale  |
| <b>ACT/SAT/WorkKeys<sup>1</sup></b> | N/A  | 27 ACT/1280 SAT <sup>4</sup>  | 27 ACT/1280 SAT <sup>4</sup>  | 27 ACT/1280 SAT <sup>4</sup> /WorkKeys (6 Reading for Information & 6 Applied Mathematics) <sup>7</sup>   | 27 ACT/1280 SAT <sup>4</sup>  | 27 ACT/1280 SAT <sup>4</sup>  | 27 ACT/1280 SAT <sup>4</sup>  |
| <b>Field Experience</b>             | N/A  | N/A   | Complete a field experience and document the experience in a portfolio specific to the student's area of focus <sup>5</sup>   | Complete a field experience and document the experience in a portfolio specific to the student's area of focus <sup>5</sup>   | Complete a field experience and document the experience in a portfolio specific to the student's area of focus <sup>5</sup>   | Complete a field experience and document the experience in a portfolio specific to the student's area of focus <sup>5</sup>   | Complete a field experience and document the experience in a portfolio specific to the student's area of focus <sup>5</sup>   |
| <b>Portfolio</b>                    | N/A  | N/A   | Develop a comprehensive portfolio of work based on the student's field experience or a topic related to the student's area of focus that is reviewed and validated by external experts <sup>6</sup> | Develop a comprehensive portfolio of work based on the student's field experience or a topic related to the student's area of focus that is reviewed and validated by external experts <sup>6</sup> | Develop a comprehensive portfolio of work based on the student's field experience or a topic that is related to the student's area of focus that is reviewed and validated by external experts <sup>6</sup> | Develop a comprehensive portfolio of work based on the student's field experience or a topic that is related to the student's area of focus that is reviewed and validated by external experts <sup>6</sup> | Develop a comprehensive portfolio of work based on the student's field experience or a topic that is related to the student's area of focus that is reviewed and validated by external experts <sup>6</sup> |
| <b>Additional Assessments</b>       | N/A  | N/A   | N/A   | Earn an industry-recognized credential or achieve proficiency benchmark for appropriate Ohio Career-Technical Competency Assessment or equivalent   | N/A   | N/A   | N/A   |

NOTE: Items shaded in blue are changes that were made to the honors diploma system, including the entire STEM, Arts, and Social Science and Civic Engagement Honors Diplomas

1/24/17



# Advanced Placement (AP)

- REQUIRED to take the AP exams given at Nordonia High School in May.
- COLLEGE CREDIT may be granted upon successful completion of these exams. The college which the student attends awards credit. Check with your individual college on its credit granting policies.
- Cost is approximately \$94 per test and \$142 for AP Seminar and AP Research.



# College Credit Plus (CCP)

- Permits college-ready students who qualify for college admission and receive state funding to participate.
- Interested students and their parents should attend a presentation every school year and at minimum, meet with their school counselor to discuss the program requirements.
- Students must declare intent and inform the High School Support Services Department by April 1<sup>st</sup> of their intent to participate in the College Credit Plus program.
- Fill out Course Request Google Form as though you will be at NHS all day for courses. We will make changes as you select CCP courses.
- [Detailed information is available in the School Counseling Office.](#)

CollegeCredit  
PLUS





# NHS Online Course Book



Browser tabs: Inbox (22) - nicole, Meet - Joey S..., My Drive - Google, IMS Scheduling Pri..., IMS Scheduling Pri..., School Counseling, take a screenshot

URL: nordoniaschools.org/Guidance.aspx

Athletics: HS | MS | PTA | NDEIC | Nordia Foundation | Employment | Transportation | Phone Directory | 1-844-SaferOH

## NORDONIA HILLS CITY SCHOOL DISTRICT

INSPIRING EVERY STUDENT TO VALUE LEARNING, COMMUNITY AND EXCELLENCE

Schools | Families | Students | Staff | Board | About | Administration

### School Counseling Department

|                                     |  |                                |
|-------------------------------------|--|--------------------------------|
| <b>Nordia High School</b>           | <b>Counselors</b>  | <b>NHS Course Book</b>         |
| Principal                           | Grade 12 Ms. Courtney Wenzel (330) 908-6023 @MsWenzelNHS2021 | General Info & Course Planning |
| Front Office                        | Grade 11 Mrs. Staci Ross (330) 908-6003 @MrsRossNHS2022      | Athletic Eligibility           |
| <b>School Counseling Department</b> | Grade 10 Mrs. Nicole Seward (330) 908-6022 @NSewardNHS2023   | Course Fees                    |
| Career Exploration and Summer Camps | Grade 9 Ms. Laura Zinke (330) 908-6024 @MsZinkeNHS2024       | English                        |
| Community Service Opportunities     | <b>Administrative Assistants</b>                             | Math                           |
| Job Opportunities                   | Ms. Karen Volin (330) 908-6018                               | Science                        |
| Library Media Center                | Mrs. Meribeth Pannitto (330) 908-6010                        | Social Studies                 |
|                                     | <b>Student Services</b>                                      | Art                            |
|                                     | ATOD/V Program Coordinator                                   | Business & Technology          |
|                                     | Dr. Deb Wallace (330) 908-6020                               | Family and Consumer Science    |
|                                     |  | World-Foreign Languages        |

# Checking Your Course Selections

- Do you have 2-4 core classes?
- Were you recommended for any advanced courses?
- Do you have between 6.0 and 7.0 total credits?
- Fill this out BEFORE you submit your Course Request Google Form

## YOUR COURSE SELECTIONS

|  | SEMESTER 1 | SEMESTER 2 |
|--|------------|------------|
| <b>1- ENGLISH</b>  |            |            |
| <b>2- MATH</b>   |            |            |
| <b>3 - ELECTIVE(s)</b>                                     |            |            |
| <b>4 - ELECTIVE(s)</b>                                     |            |            |
| <b>5 - ELECTIVE(s)</b>                                     |            |            |
| <b>6 - ELECTIVE(s)</b>                                     |            |            |
| <b>7 - STUDY HALL(s) or additional electives if needed</b> |            |            |

# EXAMPLE

## Checking Your Course Selections

- Do you have 4 core classes?
- Do you have PE?
- Do you have Health?
- What about your Fine Arts credit?
- Do you have between 6.0 and 7.0 total credits?

|                        | SEMESTER 1                     | SEMESTER 2                     |
|------------------------|--------------------------------|--------------------------------|
| <b>1- ENGLISH</b>      | AP English Lang. (1.0)<br>1401 | →                              |
| <b>2- MATH</b>         | Pre-Calculus(1.0)<br>2400      | →                              |
| <b>3 - ELECTIVE(s)</b> | AP Psychology (1.0)<br>4610    | →                              |
| <b>4 - ELECTIVE(s)</b> | Yearbook (1.0)<br>1900         | →                              |
| <b>5 - ELECTIVE(s)</b> | Art I (0.5)<br>7110            | Personal Finance (0.5)<br>6002 |
| <b>6 - ELECTIVE(s)</b> | Spanish II (1.0)<br>5150       | →                              |
| <b>7 - ELECTIVE(s)</b> | Senior Experience (0.0)        | Senior Experience (0.0)        |



# QUESTIONS??



Your family, friends, peers, teachers, and school counselor are all great resources for gaining insight into courses! Do your research so you know what to expect before signing up for a class!

Miss. Wenzel << [courtney.wenzel@nordoniaschools.org](mailto:courtney.wenzel@nordoniaschools.org) >>  
330.908.6023